

MT AGUNG ACTIVITY REPORT

Date: 02-12-2017 09:00 WITA from Gaia-Oasis Tejakula.

SITUATION AT GAIA-OASIS

Visually, the air is clear. No smoke or ash has been seen or smelt. No noise or quakes from Mt Agung have been felt or reported.

SITUATION AT AIRPORT

VONA (Volcano Observatory Notice for Aviation) remains at ORANGE.

Bali Airport remains open. The situation will be reevaluated every 6 hours.

458 flights took place as scheduled yesterday.

33 recovery/relief flights have occurred to move passengers delayed.

Indonesia continues to offer free visa extension Stay On Force Majeure for those awaiting a rescheduled flight.

9 embassies have set up counters at Denpasar Airport.

Government buses continue to run from Bali Airport to Surabaya.

Wind direction is from the north/northwest at 10 knots, with volcanic ash moving south-southeast within the airspace 24.000 feet above the airport.

Latest reports places the airport 29 nautical miles (NM) outside the area of ash spread.

SITUATION AT MT AGUNG

Volcano is estimated to be entering a critical phase. Eruption and ash emission is continuing, even so activity has slowed.

Last night, white smoke at medium pressure, thick intensity, height 2000 m above the crater observed.

This morning to 06:00 WITA, no smoke has been observed.

Seismic, satellite and geochemical readings and volcanic glow indicate magma continues to accumulate.

Current estimate is 20 million cubic metres of lava collected in the crater.

Continuous tremor at max scale 23mm recorded 16:42 - 17:16 WITA yesterday

A felt earthquake at 3.5 SR was recorded 17 kms northeast of Karangasem yesterday at 21.54 WITA, related to the intrusion of magma to Mt Agung.

SO₂ (Sulfur Dioksida) around the volcano crater has been detected at rates of 2000-3000 tons.

Current indicators point to a relatively small eruption of VEI 2 (volcanic eruptive index 2).

The largest volcanic eruptions in recorded human history are VEI 7. The scale is logarithmic viz. a VEI 2 is 10 times smaller than a VEI 3, and so on.

OTHER:

Within the 5 km zone, woody plants like coffee, champak, mngosteen are dropping their leaves and some have died. Grass from Sogra hamlet thru to the Pasar Agung temple has totally dried. Abandoned animals in the zone have died from starvation or overcome by sulphurous fumes.

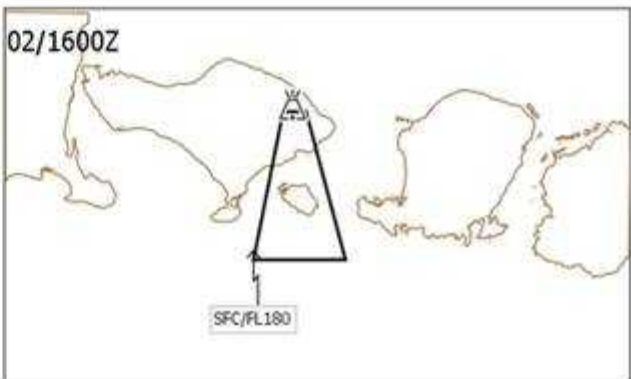
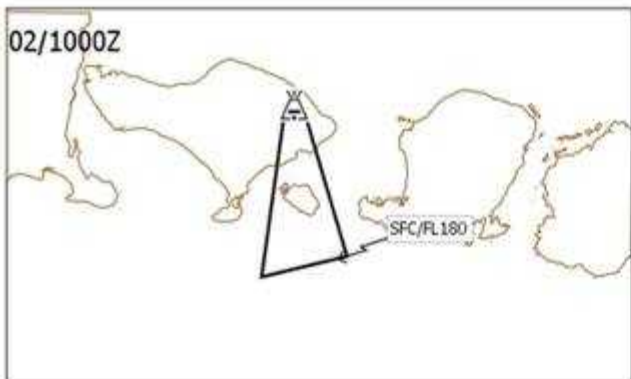
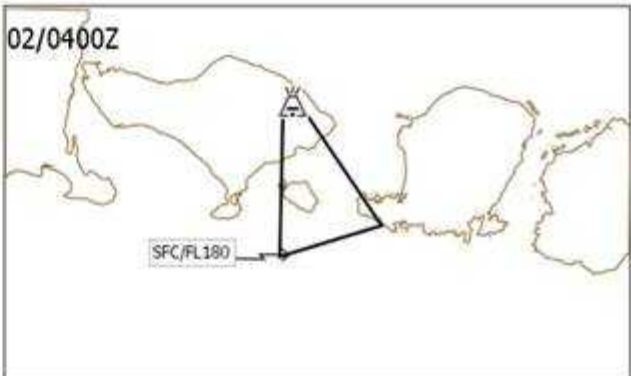
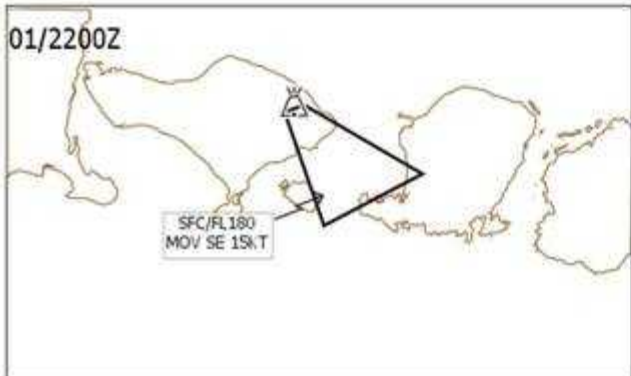
Temple ceremonies at Kiduling Kereteg Temple in the Danger Zone are going ahead at Full Moon tomorrow, albeit shortened from 3 days to 1 day. The ceremonies are for balance in the universal flow, and that the fires in the belly of the earth (karma agni) will be ordered in keeping with natural law.

Mudflows at the headwaters have caused water pipes to break, disrupting water supply to 15.000 people in Klungkung area. Local tourists are crowding onto bridges above the mudflows to witness the event. Government is advising caution and asking people to avoid the bridges.

An estimated 30.000 to 60.000 people are still within the Danger Zone, which can be reached by destructive pyroclastic flows within 2.5 minutes in the event of an explosive eruption. Evacuation efforts are slow as people remain unwilling to move. Some have sent their elderly parents and young children to the camps, but the adults themselves remain waiting at home until the sirens sound indicating 2 hours before a magmatic eruption.

The Les Evacuation Camp near Tejakula is being prepared to host the expected thousands of refugees that will flood into the area should magmatic eruption commence. Gaia-Oasis is working to build toilets with the North Bali Red Cross, and to provide weekly vegetables and plant proteins to refugees, with the Social Department. Yesterday, we joined the Red Cross to distribute baby kits and to give out vitamins for children; we thank our donors for their incredible generosity. We will gratefully pass on any and all contributions.

[Ash movement forecast from Darwin Volcano Ash Advisory Centre, working with the PVMBG \(Indonesia's Volcanology board\)](#)



VOLCANIC ASH ADVISORY

DTG:	2017201/2200Z	ADVISORY NR:	201750
VACC:	DARWIN	INFO SOURCE:	HONGKONG & WEBCAM
VOLCANO:	AGUNG 29620	AVIATION COLOUR CODE:	RED
PRR:	3003 011530	ERUPTION DETAILS:	ASH/STEAM EMISSION TO FL180
AREA:	INDONESIA	NOTE:	VA CURRENTLY NOT IDENTIFIABLE ON SATELLITE IMAGERY AND COVERED IN CLOUD ON WEBCAM, BUT STILL DIRECTED IN AREA, THEREFORE POLYGON ESTIMATED BASED ON MODEL WINDS. NO EVIDENCE TO SUGGEST ERUPTION HAS CEASED. FORECAST BASED ON CONSENSUS MODEL GUIDANCE.
QNHFT:	24CM	NBT ADVISORY:	NO LATER THAN 2017202/0130Z
BLV:			