

MT AGUNG ACTIVITY REPORT

Date: 25-12-2017 09:00 WITA from Gaia-Oasis Tejakula.

SITUATION AT GAIA-OASIS

Visually, the air is clear. No noise or quakes from Mt Agung have been felt or reported. Wind direction has been continuously from West to East. No smoke, ash or any other gases have been seen or smelt.

Neither staff nor guests have felt any impacts or suffered smarting eyes or had any breathing issues.

Rain continues, interspersed with sun, and may have a role in helping any ash to settle more quickly.

Overall, the situation continues peaceful and calm.

Yesterday, we said goodbye to Giten Tonkov and Chetana Barkan, our incredible group leaders, even as we welcome Khris & Amana's group.

Over 40 participants will arrive for a seminar entitled "Learning Love in Paradise", which begins at dinner on Boxing Day.

Yes indeed – Bali is a beautiful place to go more deeply into love.

SITUATION AT AIRPORT

Mt Agung has had 2 eruptions in the last 2 days; despite this, Bali Airport is open and all facilities are 100% available and running.

The Meteorological Board has confirmed that the airport is not impacted as prevailing westerly winds are expected to continue until at least January.

The government has assured that Banyuwangi Airport (3-4 hours drive from Gaia) and Surabaya Airport are on standby in case of airport closure.

A fresh VONA (Volcano Observatory Notice for Aviation) dated 24 December 2017 has been issued; the code remains at ORANGE.

It notes an eruption with volcanic ash cloud at 02:05 UTC (10:05 local), with cloud top around 5642M above sea level. Eruption and ash emission is not continuing.

The Darwin VAAC (Volcanic Ash Advisory Centre) notes discrete volcanic ash eruptions to Flight Level 19.000 feet are expected to continue.

Hot spot was observed on multispectral imagery.

SITUATION AT MT AGUNG

Volcano is estimated to be in a critical phase.

After the initial phreatomagmatic eruptions of 25-29 November, the volcano entered a period of relative calm.

Between 7-13 December, the volcano had another burst of activity, with 7 small eruptions on the first day, then small daily eruptions.

On 23 December, the volcano erupted at 11:57 WITA and yesterday, it erupted again at 10:05 WITA.

Yesterday's eruption lasted 10 minutes and spewed thick smoke and ash to 2.500 meters from the crater peak.

Villagers at Dukuh village, 5-6 kms from the crater, reported hearing a sound like the roar of jet engines, followed by the sound of an explosion.

Ash and sand rained down for 4 hours, commencing 10:20 am.

Roads and roofs were covered with ash 5-8 mm thick.

Ash was also reported in Tulamben village, with roads, windscreens, roofs and vehicles being lightly coated with ash.

Bike riders in the area had to resort to wearing dust masks and protective eyewear.

Batudawa, Muntig and other hamlets on the upper reaches of Tulamben also experienced thick ashfall of several mms.

Dr Devy Kamal of the Volcanology Board has explained that, in the 6 hours prior to the eruption, there were increased quakes (8 volcanic quakes, 8 gusts, 1 overscale).

“So each time there are volcanic quakes we need to be careful because now the system is not in a stable condition. Meaning each time there is an injection of fresh magma, an eruption can be triggered”. Dr Devy stated that the eruptions happening now are still smaller than those during 25-29 November.

23 volcanic gusts (“hembusan”) occurred yesterday, releasing gas and previously extruded lava, in bursts of between 22 – 100 seconds, at 3-25 mm.

8 low frequency, volcanic and tectonic quakes were recorded, indicating continued magma movement to the surface.

Continuous microtremor was recorded with amplitude 1-4 mm (dominant 1 mm).

Thick fog reduced visibility of smoke; volcanic glow was observed from Bukit Asah station.

Wind forecast is from west at 15-25 knots (3000 ft), at 10-15 knots (5000 ft); and from southeast/south/northeast at 5 knots (18.000 feet)

All parameters such as visual, seismic, deformation, geochemical and long-sensor satellite observations continue to be monitored.

Since 1800, the volcano has had several smaller VEI 2 eruptions, and two larger VEI 5 eruptions.

To date, Mt Agung has had smaller, effusive eruptions. However, the possibility of a more explosive eruption remains.

OTHER:

Current figures show another slight decrease of 71.045 refugees spread in 239 camps in 9 regencies throughout Bali.

An estimated 16.255 people have yet to move from the Danger Zones within the 10km area. Numbers continue to fluctuate.

Yesterday, Gaia-Oasis celebrated our 19th Birthday with over 70 staff and their families, members & guests. We gave out 10 Year Service Awards to 10 staff.

Gaia-Oasis was recently awarded a Commendation from the Regency Manpower Department, and we are proud of our standing as an Employer of Choice.

We send love, joy and blessings for all beloved friends & group leaders, and we wish you a wonderful Christmas Season.

PLEASE ACCEPT OUR GRATITUDE :

Gaia-Oasis has several groups on standby, who are committed to coming to Bali to support the island and her people should conditions allow.

Our Founder, Sabine, our Foundation Head, Saicho, our PT Director, Franziska, and our EV Director, Petra, are all currently here, standing by our guests, our staff, and the beautiful island of Bali.

We will never ask our groups and guests to take any untoward risks, or expose anyone to situations that will threaten health or life.

We thank you for your incredible support and generosity in standing by us;
We are working to pass it on and pay it forward via our work in Bali.

Thank you, thank you, thank you.

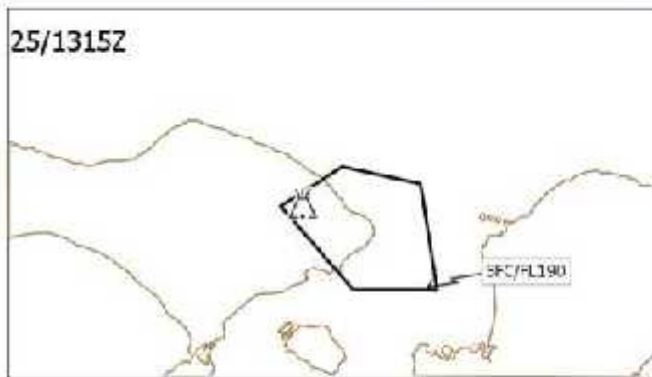
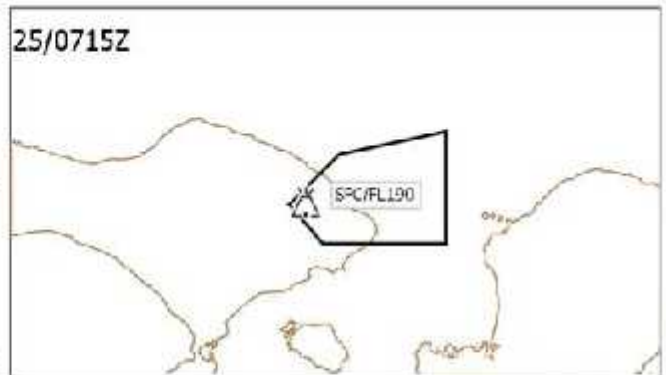
Om Santi Santi Santi Om

Yen and the Gaia Team

Mt Agung photo taken from Lempuyang Temple on 26 September, after increased activity was first recorded.



Revised VAAC Advisory



VOLCANIC ASH ADVISORY

DTG:	2017225/0115Z	ADVISORY NR:	2017/149
VRAC:	DARWIN	INFO SOURCE:	HIMAWARI-8/RECCAM/VOIR
VOLCANO:	AGUNG 26400	AVIATION COLOUR CODE:	ORANGE
PSH:	50821 211530	ERUPTION DETAILS:	ERUPTION TO FL190 EXT NE LAST OBS AT 240205Z.
AREA:	INDONESIA	RWK:	VA IS NOT DISCRIBIBLE ON SATELLITE IMAGE DUE TO MET CLOUD. HOT SPOT OBSERVED ON MULTISPECTRAL IMAGERY. REGULAR DISCRETE VA TO FL190 EXPECTED TO CONTINUE. VA HEIGHT AND MOVEMENT BASED ON MODCL GUIDANCE AND SURABAYA 241202 50J-DEIC.
SUMMIT:	3142M		
FLY:		NOT ADVISORY	NO LATER THAN 2017225/0715Z