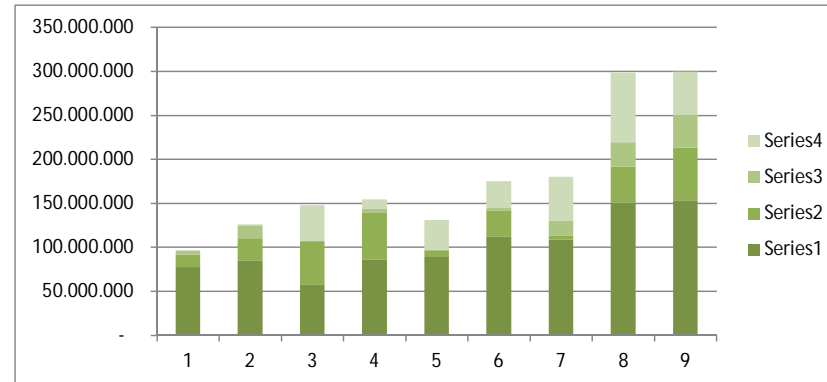


REKAP SUMBANGAN MASYARAKAT DARI YAYASAN 2008 - 2016

	1 (2008)	2 (2009)	3 (2010)	4 (2011)	5 (2012)	6 (2013)	7 (2014)	8 (2015)	9 (2016)
1. Pengentasan Kemiskinan dan Pendidikan	77.287.350	84.211.800	57.741.350	86.233.500	88.773.190	111.810.000	108.348.626	150.674.800	153.247.800
2. Pelestarian Lingkungan Hidup	13.979.900	25.775.850	49.015.750	53.242.250	7.734.500	29.100.000	5.092.400	40.473.762	60.108.030
3. Program Budaya dan Keagamaan	4.420.000	14.980.000	-	4.130.000	500.000	3.500.000	16.576.000	27.750.000	36.215.000
4. Admin & Bank	586.219	618.382	41.146.858	10.406.463	33.963.654	30.776.228	49.894.879	79.333.204	49.656.229
TOTAL	96.273.469	125.586.032	147.903.958	154.012.213	130.971.344	175.186.228	179.911.905	298.231.766	299.227.059



REKAP SUMBANGAN PAJAK (PAD & RI) DARI PROGRAM MEDITASI YAYASAN 2008 - 2016

	1 (2008)	2 (2009)	3 (2010)	4 (2011)	5 (2012)	6 (2013)	7 (2014)	8 (2015)	9 (2016)
1. Sumbangan PHR	47.683.235	76.032.342	42.771.231	82.211.318	105.734.290	121.020.588	188.953.153	213.883.880	216.222.504
2. Pajak Psl 25 / Psl 4(2)	-	17.662.264	-	11.217.591	12.349.012	10.837.745	17.189.483	19.457.816	21.628.364
TOTAL	47.683.235	93.694.606	42.771.231	93.428.909	118.083.302	131.858.333	206.142.636	233.341.696	237.850.868

